

## Rubber Flap Check Valve DIN3202.F6, BS5153, BS EN12334/EN16767

Rubber Flap Check Valve, is designed to prevent reverse flow automatically. During system flow conditions, the movement of the fluid forces the disc to the open position allowing 100% un-restricted flow area through the valve. Under reverse flow conditions, the disc automatically returns to the closed position to prevent reverse flow. The valve is of the swing check type utilizing an angled seat and fully encapsulated, resilient disc. It is capable of handling a wide range of fluids including flows containing suspended solids.



### MAIN FEATURES

- ✓ rubber seated, 100% sealing, zero leakage.
- ✓ easily rubber lined for abrasion resistance.
- ✓ 100% testing before packing and delivery.
- ✓ 100% flow area, full waterway for low headloss.
- ✓ suitable for Horizontal or vertical installation.
- ✓ one piece disc, special precision molded EPDM.
- ✓ internal steel re-enforcement disc for positive closure.
- ✓ non slam, non-clogging.
- ✓ does not need counterweight.
- ✓ lower power consumption due to lower headloss.
- ✓ WRAS approved material for drinking water upon request.

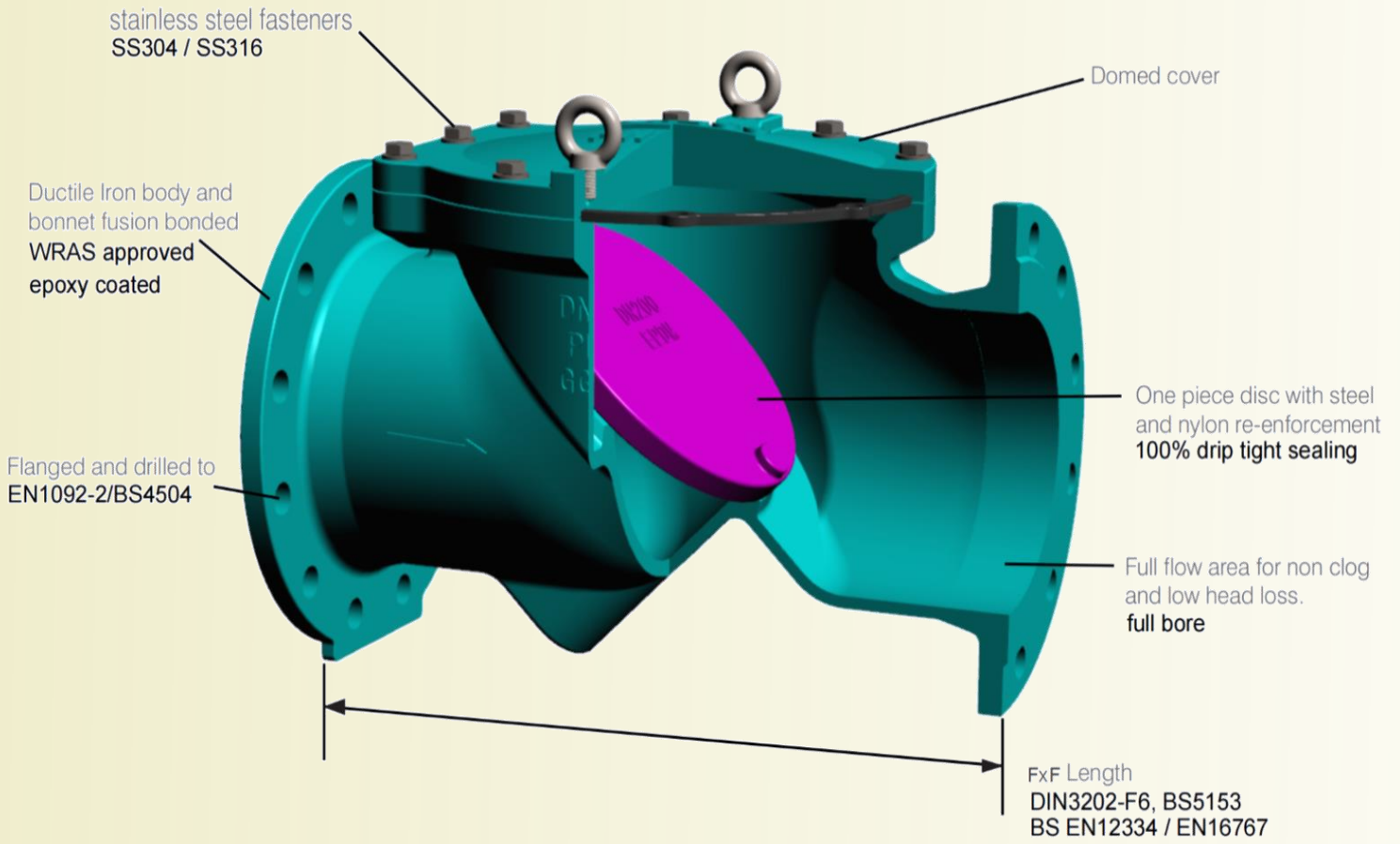
### Standards

- ✓ Hydraulic tests according to EN-12266-1, Class A.
- ✓ Design: DIN3202-F6, BS5153, BS EN12334/EN16767.
- ✓ Flanges to EN-1092-2, BS4504.

### Service Fields

- ✓ Potable water and neutral liquid applications.
- ✓ Main transmission pipelines.
- ✓ irrigation system.
- ✓ Firefighting.
- ✓ Pump stations.

**DESIGN FEATURES**



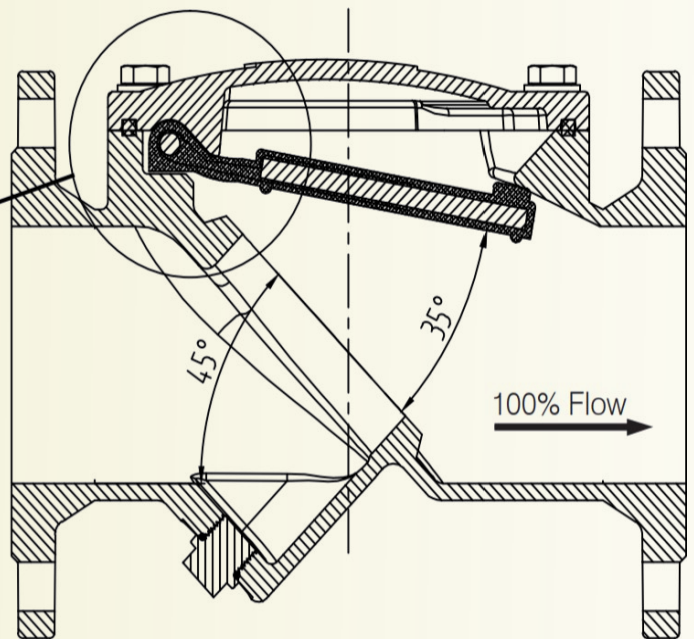
**DETAIL VIEW**

EPDM

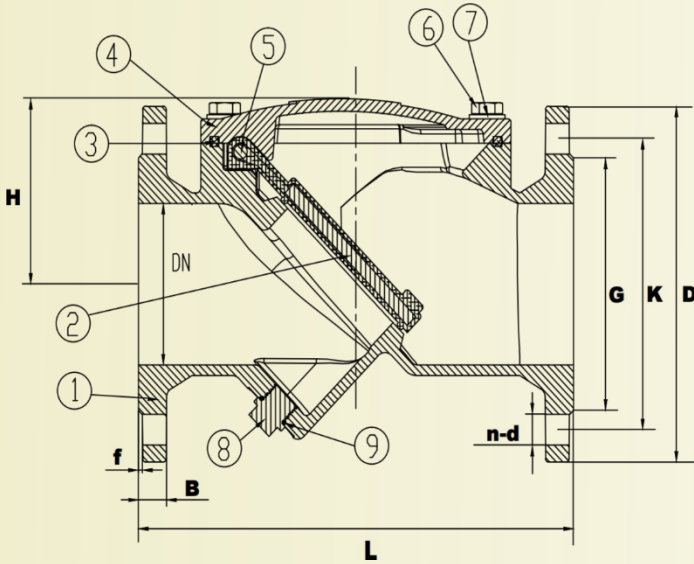
STAINLESS  
STEEL

NYLON  
REINFORCED

WCB



## PART LIST & Dimensions



| No. | Component | Standard Material     |
|-----|-----------|-----------------------|
| 1   | Body      | Ductile Iron GJS500-7 |
| 2   | Flapper   | WCB + EPDM / NBR      |
| 3   | Gasket    | NBR / EPDM            |
| 4   | Cover     | Ductile Iron GJS500-7 |
| 5   | Shaft Pin | SS304 / SS316         |
| 6   | Bolt      | SS304 / SS316         |
| 7   | Washer    | SS304 / SS316         |
| 8   | Plug      | SS304 / SS316         |
| 9   | O Ring    | NBR / EPDM            |

WRAS approved EDPM rubber upon request.

| Nominal Diameter | OUTLINE mm       |        |      |   |     | Flange Dimension (EN1092-2 1 BS4504) PN10 |     |     |       |
|------------------|------------------|--------|------|---|-----|---|-----|-----|-------|
|                  | Face to face (L) |        | B    | f | H   | D   | K   | G   | n*d   |
| DN               | BS5153           | DIN-F6 |      |   |     |   |     |     |       |
| 50               | 203              | 200    | 19   | 3 | 95  | 165                                       | 125 | 99  | 4*19  |
| 65               | 216              | 240    | 19   | 3 | 100 | 185                                       | 145 | 118 | 4*19  |
| 80               | 241              | 260    | 19   | 3 | 105 | 200                                       | 160 | 132 | 8*19  |
| 100              | 292              | 300    | 19   | 3 | 115 | 220                                       | 180 | 156 | 8*19  |
| 125              | 330              | 350    | 19   | 3 | 145 | 250                                       | 210 | 184 | 8*19  |
| 150              | 356              | 400    | 19   | 3 | 155 | 285                                       | 240 | 211 | 8*23  |
| 200              | 495              | 500    | 20   | 3 | 250 | 340                                       | 295 | 266 | 8-Ø23 |
| 250              | 622              | 600    | 22   | 3 | 300 | 405                                       | 350 | 319 | 12*23 |
| 300              | 698              | 700    | 24.5 | 4 | 330 | 460                                       | 400 | 370 | 12*23 |
| 350              | 787              | —      | 26.5 | 4 | —   | 520                                       | 460 | 429 | 16*23 |
| 400              | 914              | —      | 28   | 4 | —   | 580                                       | 515 | 480 | 16*28 |
| 450              | 965              | —      | 30   | 4 | —   | 640                                       | 565 | 530 | 20*28 |
| 500              | 1067             | —      | 31.5 | 4 | —   | 715                                       | 620 | 582 | 20*28 |
| 600              | 1219             | —      | 36   | 5 | —   | 840                                       | 725 | 682 | 20*31 |

| Nominal Diameter | OUTLINE mm       |        |      |   |     | Flange Dimension (EN1092-2 1 BS4504) PN16 |     |     |       |
|------------------|------------------|--------|------|---|-----|---|-----|-----|-------|
|                  | Face to face (L) |        | B    | f | H   | D   | K   | G   | n*d   |
| DN               | BS5153           | DIN-F6 |      |   |     |   |     |     |       |
| 50               | 203              | 200    | 19   | 3 | 95  | 165                                       | 125 | 99  | 4*19  |
| 65               | 216              | 240    | 19   | 3 | 100 | 185                                       | 145 | 118 | 4*19  |
| 80               | 241              | 260    | 19   | 3 | 105 | 200                                       | 160 | 132 | 8*19  |
| 100              | 292              | 300    | 19   | 3 | 115 | 220                                       | 180 | 156 | 8*19  |
| 125              | 330              | 350    | 19   | 3 | 145 | 250                                       | 210 | 184 | 8*19  |
| 150              | 356              | 400    | 19   | 3 | 155 | 285                                       | 240 | 211 | 8*23  |
| 200              | 495              | 500    | 20   | 3 | 250 | 340                                       | 295 | 266 | 12*23 |
| 250              | 622              | 600    | 22   | 3 | 300 | 405                                       | 355 | 319 | 12*28 |
| 300              | 698              | 700    | 24.5 | 4 | 330 | 460                                       | 410 | 370 | 12*28 |
| 350              | 787              | —      | 26.5 | 4 | —   | 520                                       | 470 | 429 | 16*28 |
| 400              | 914              | —      | 28   | 4 | —   | 580                                       | 525 | 480 | 16*31 |
| 450              | 965              | —      | 30   | 4 | —   | 640                                       | 585 | 548 | 20*31 |
| 500              | 1067             | —      | 31.5 | 4 | —   | 715                                       | 650 | 609 | 20*34 |
| 600              | 1219             | —      | 36   | 5 | —   | 840                                       | 770 | 720 | 20*37 |